



SCARLET | TECH

INTRINSICALLY SAFE WIRELESS ANEMOMETER

WSD-E11



- ATEX intrinsically safe certificated
- First of its kind in the world
- Wireless technology real time update
- Long transmission distance
- Long sensor battery life
- Industrial outputs integration

Introduction

Scarlet Long Range Wireless Explosion Proof Anemometer WSD-E11 adopt state-of-art wireless technology and obtain ATEX certification.

Unlike the existing explosion proof anemometers in the market, Scarlet WSD-E11 stands out for its wireless technology. Operators can monitor the wind condition in safe distance without cable connection. Integration with your own safety system is also feasible via 4-20mA industrial output. Optional Bluetooth connectivity allows users to monitor wind condition in real time on their smartphones by using Scarlet Windsmart App. With all these unique features, Scarlet aims to improve operation safety in all kinds of harsh environment.

Features

- Certified as EX II 2 G EX ib IIB T4 . Monitor wind condition in hazardous area
- IP67 Water-proof. Withstands harsh environments.
- Smartphone connectivity via bluetooth and using Windsmart iOS/Android App
- Long wireless transmission range. Up to 400m/1300m(XB model only) (2000m with additional external antenna)
- 4 years sensor battery life.
- Integrated alarm & pre-alarm warning lights
- Build-in audible alarm
- 4 programmable contact relay outputs
- Backlighted graphic LCD with large digits

Functions

- Real time wind speed and direction
- Bar graph of wind gust in the last 2 minutes
- Temperature
- 4 programmable contact relay outputs
- 4-20 mA industrial outputs, allows external devices connectivity
- 8 hours of wind speed data on history graph
- Multiple display units connect to one sensor, synchronized monitoring



Application Areas



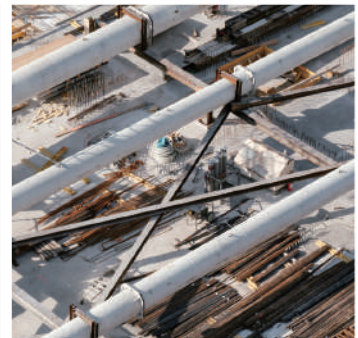
Offshore/onshore platform



Oil & gas industry



Mining industry



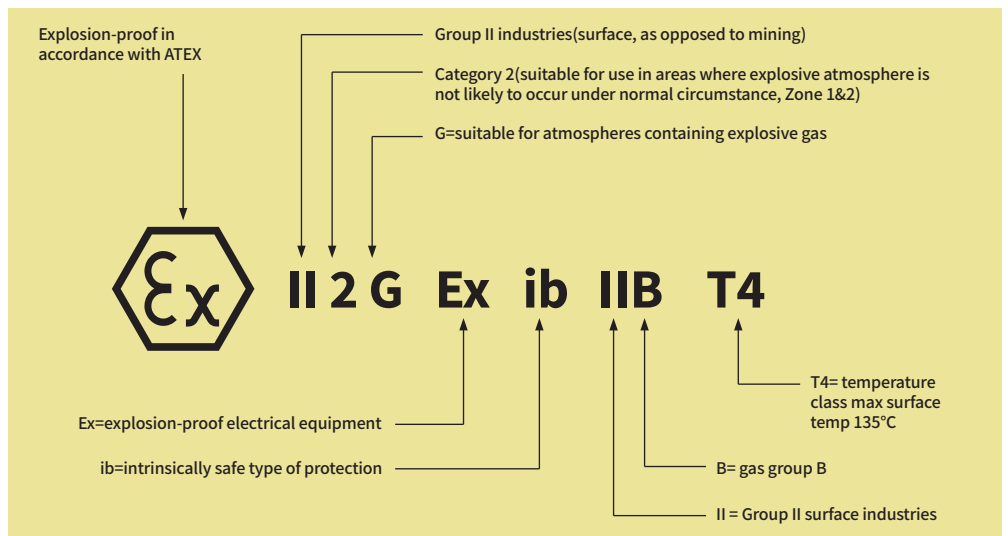
Construction

Technical Specification

| Item | Description |
|----------------------------------|---|
| ATEX Explosion-proof Level | EX II 2 G EX ib IIB T4 |
| Wind Speed Measurement Range | 0.3...50 m/s |
| Wind Speed Accuracy | +/- 3 % |
| Wind Speed Resolution | 0.1 m/s |
| Units of Measurement | m/s, km/h, knots, mph, Bf |
| Wind Direction Measurement Range | 0-360°, no blank sector, contactless magnetic measuring principle |
| Temperature Measurement Range | -30...55°C |
| Temperature Resolution | 0.5 °C |
| Dimensions - Sensor | height 210 mm; diameter (cup to cup) 120mm |
| Dimensions - Receiver | 150 x 80 x 55 mm |
| Operating voltage | 12...24 V DC |
| Antenna input (receiver) | 50 ohm, SMA connector |
| Data transmission | every 2 seconds |
| Measurement interval | 2 seconds |
| Transmission frequency | 868 MHz/ +10 dBm(standard); 908 MHz, 922 MHz (customizable) |
| Battery - sensor | 3.6V AA Lithium battery, Type:LS14500EX, Brand: SAFT |
| Audible alarm | 85...90 dB |
| Relay Contacts Output | 4 x relays, 2 A / 24 V |
| 4-20 mA Outputs | 4 mA=0 m/s, 20 mA=50 m/s (programmable) |
| Bluetooth | Optional. Range up to 40m |
| Mounting | Self-Leveling Mounting Bracket |



Certificate



Instructions



Scarlet Tech Co., Ltd.
© 2021 Scarlet Tech Co., Ltd. All rights reserved.
4F-3, No. 347 , HePing E Rd, 2nd Sec, DaAn District, Taipei City 106, Taiwan
info@scarlet.com.tw
www.scarlet-tech.com

version 220503